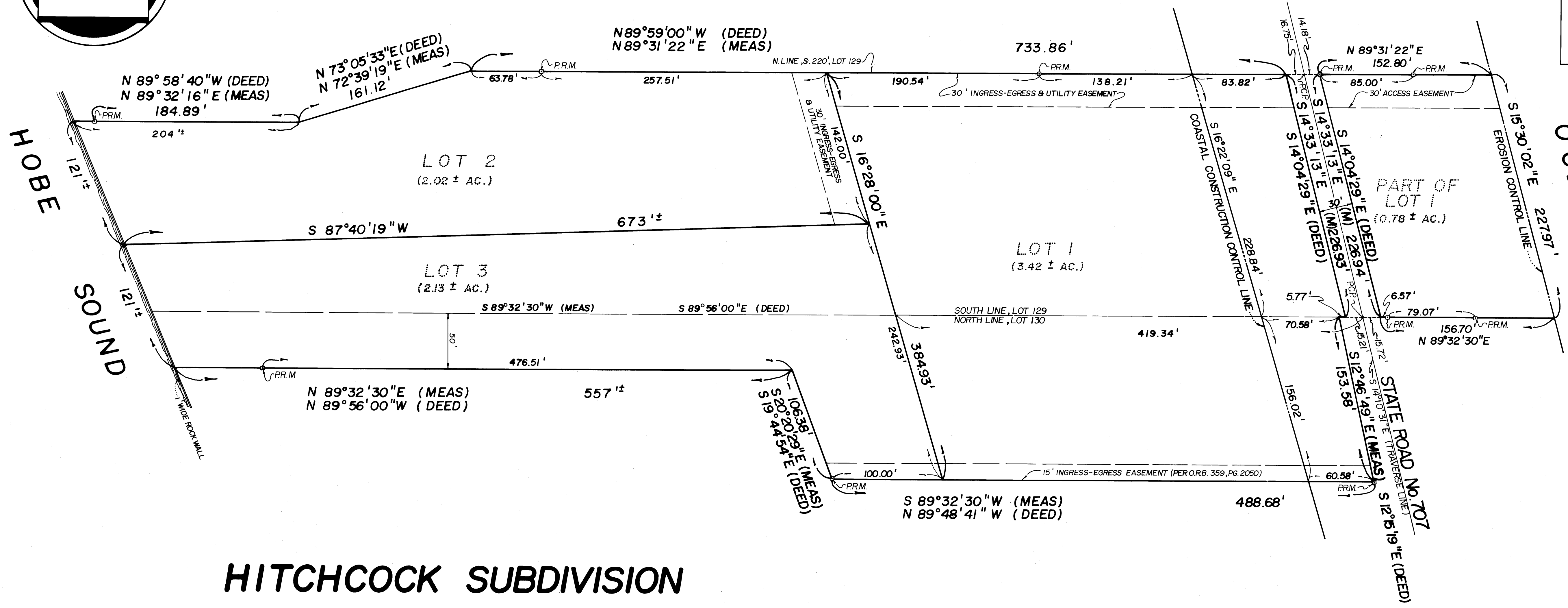
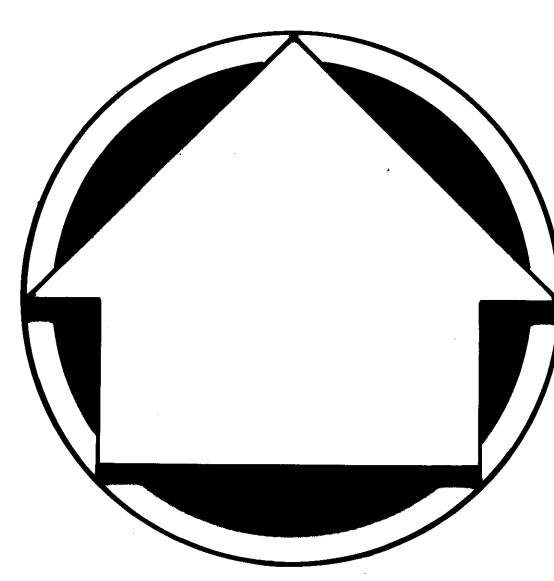


I, MARSHA STILLER, Clerk of the CIRCUIT COURT of MARTIN COUNTY, FLORIDA, HEREBY CERTIFY that this PLAT was FILED for RECORD in PLAT BOOK 11, PAGE 10, MARTIN COUNTY, FLORIDA, PUBLIC RECORDS, this day of 1987.

MARSHA STILLER  
Clerk of the CIRCUIT COURT  
MARTIN COUNTY, FLORIDA

By: \_\_\_\_\_  
Deputy Clerk

FILE No. \_\_\_\_\_



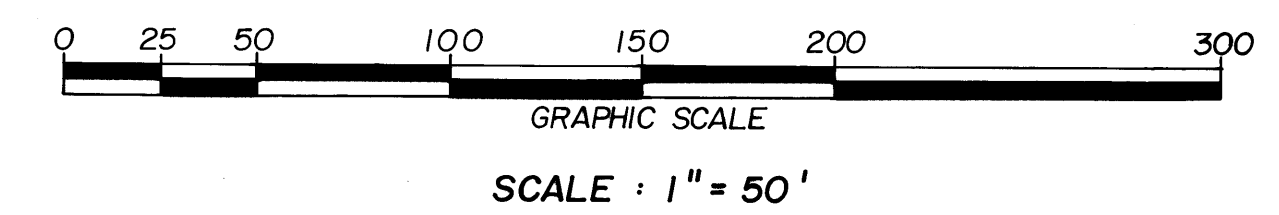
# HITCHCOCK SUBDIVISION

A RESUBDIVISION OF PORTIONS OF LOTS 129 & 130, PLAT OF GOMEZ GRANT AND JUPITER ISLAND, PLAT BOOK 1, PAGE 80, PUBLIC RECORDS OF PALM BEACH COUNTY, (NOW MARTIN) FLORIDA.

TOWN OF JUPITER ISLAND,  
MARTIN COUNTY, FLORIDA

ORDER NO. 801649      FIELD BOOK: PB 46, PG. 9      DECEMBER 1987

SHEET 2 OF 2 SHEETS



- NOTES:
- 1) PERMANENT REFERENCE MONUMENTS SHOWN THUS: P.R.M.
  - 2) PERMANENT CONTROL POINTS SHOWN THUS: P.C.P.
  - 3) BEARINGS SHOWN HEREON AS MEASURED, ARE RELATIVE TO THOSE SHOWN ON THE COASTAL CONSTRUCTION CONTROL LINE, FILED FOR RECORD JULY 9, 1985 IN PLAT BOOK 9 AT PAGE 99.
  - 4) THERE MAY BE ADDITIONAL RESTRICTIONS THAT ARE NOT RECORDED ON THIS PLAT THAT MAY BE FOUND IN THE PUBLIC RECORDS OF THIS COUNTY.
  - 5) NO ATTEMPT HAS BEEN MADE TO ESTABLISH MEAN HIGH WATER LINES FOR HOBE SOUND OR THE ATLANTIC OCEAN.

**SCHWEBKE-SHISKIN & ASSOCIATES, INC.**  
LAND PLANNERS    ENGINEERS    ARCHITECTS    LAND SURVEYORS  
18800 NW 2nd AVE, MIAMI • 16201 SW 95th AVE, MIAMI • 6531 A SUNSET STRIP, SUNRISE • 50 SOUTH US HIGHWAY ONE, JUPITER